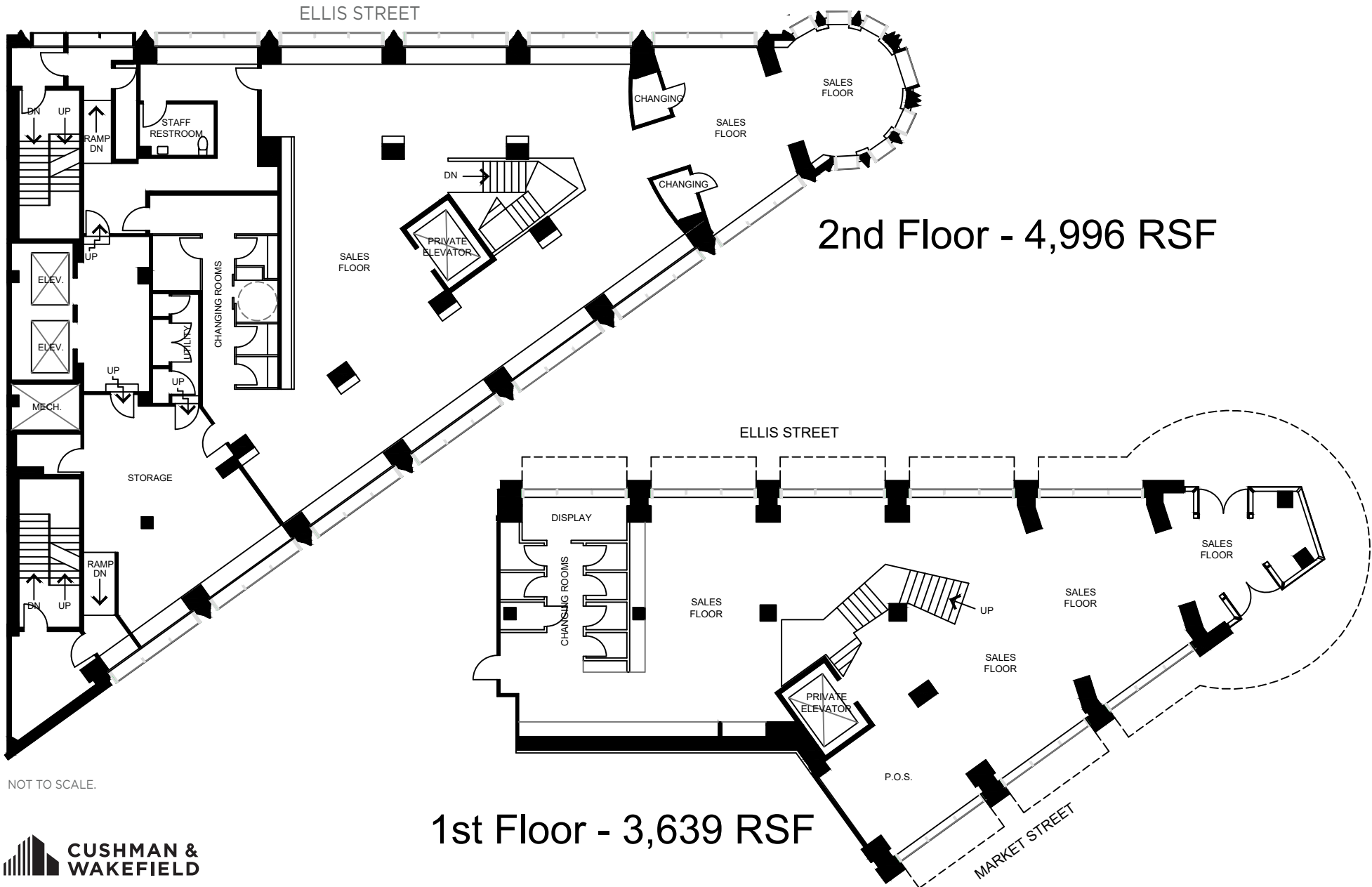


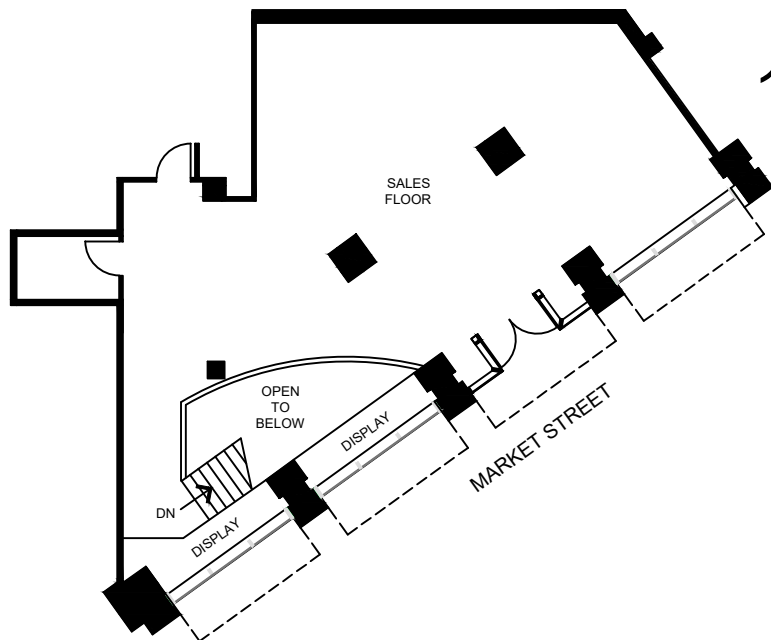
800  
MARKET  
STREET  
SAN FRANCISCO

 CUSHMAN &  
WAKEFIELD

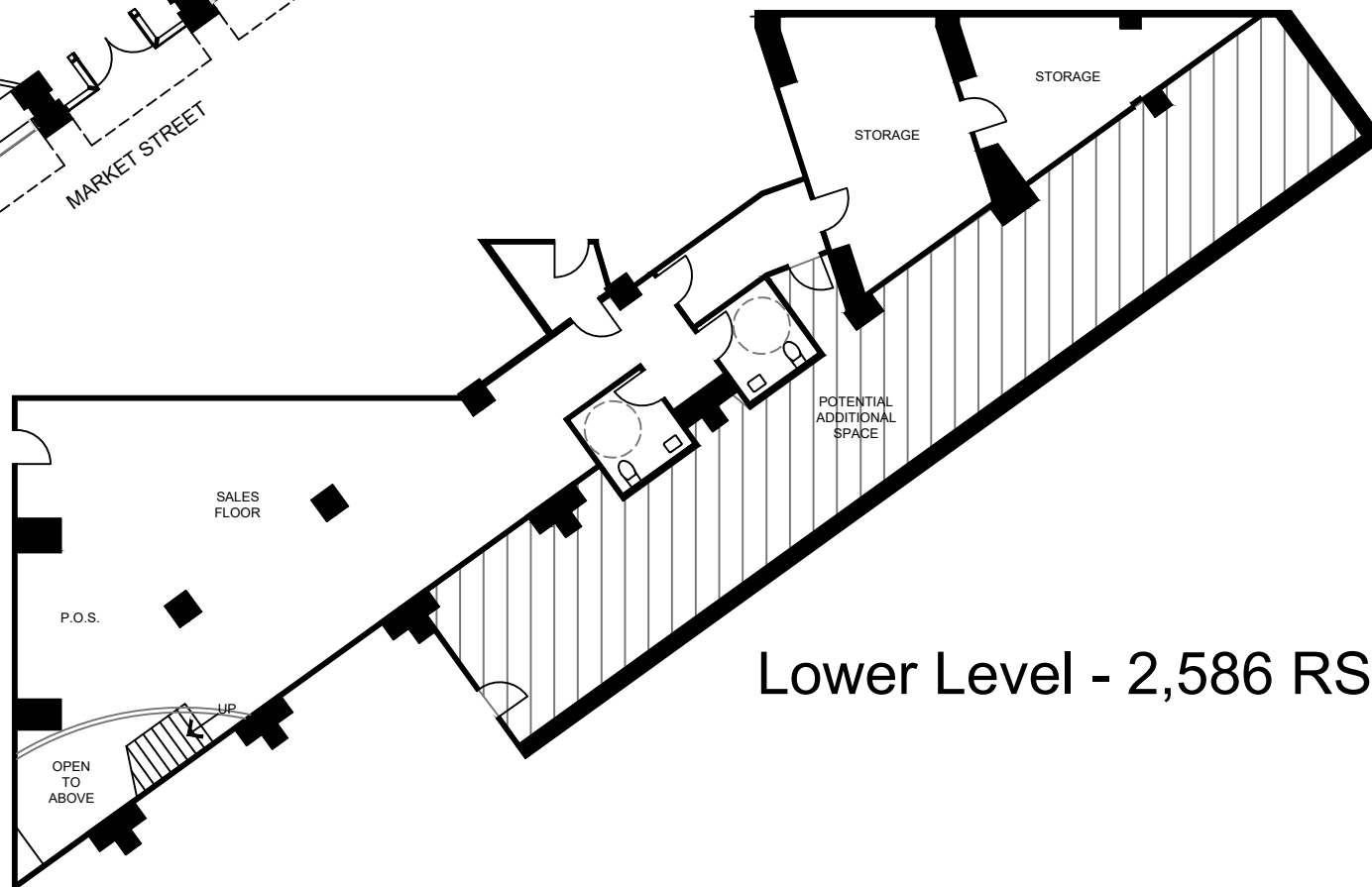
 FOUNTAINHEAD  
DEVELOPMENT

±5,600 RSF  
CREATIVE FULL FLOORS AVAILABLE



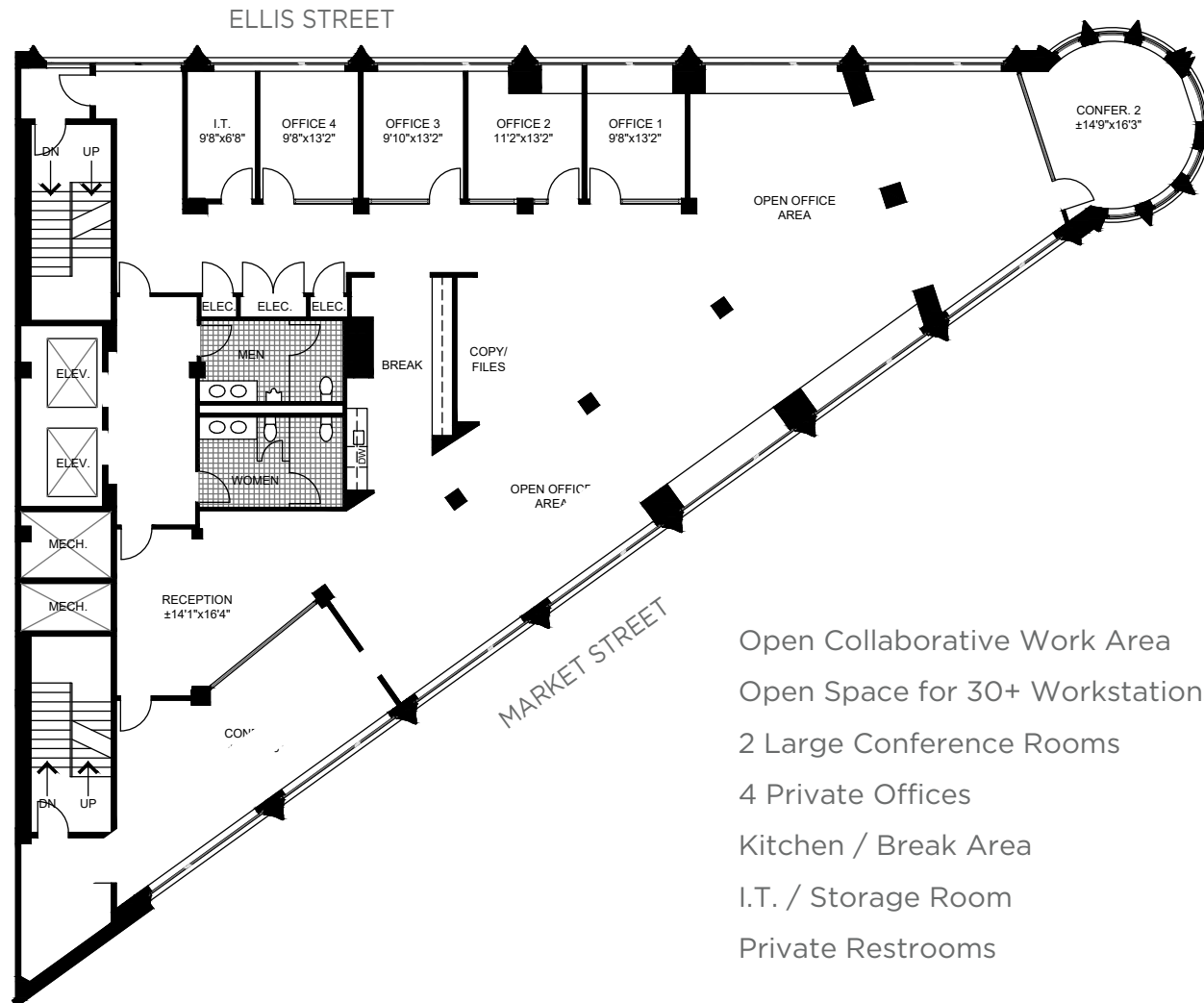


**1 Floor - 2,007 RSF**



**Lower Level - 2,586 RSF**

NOT TO SCALE.



- Open Collaborative Work Area
- Open Space for 30+ Workstations
- 2 Large Conference Rooms
- 4 Private Offices
- Kitchen / Break Area
- I.T. / Storage Room
- Private Restrooms

# 800

## MARKET STREET

SAN FRANCISCO

### PROPERTY ADDRESS

800 Market Street, San Francisco, CA 94102

#### J.D. LUMPKIN

Executive Managing Director

415.677.0466

brendon.kane@cushwake.com

#### BRENDON KANE

Executive Director

415.677.0466

brendon.kane@cushwake.com

#### ELENA SACCONI

Director

630.699.9687

elena.saccone@cushwake.com

#### BAILEE ESPOSITO

Senior Associate

203.561.9499

bailee.esposito@cushwake.com

