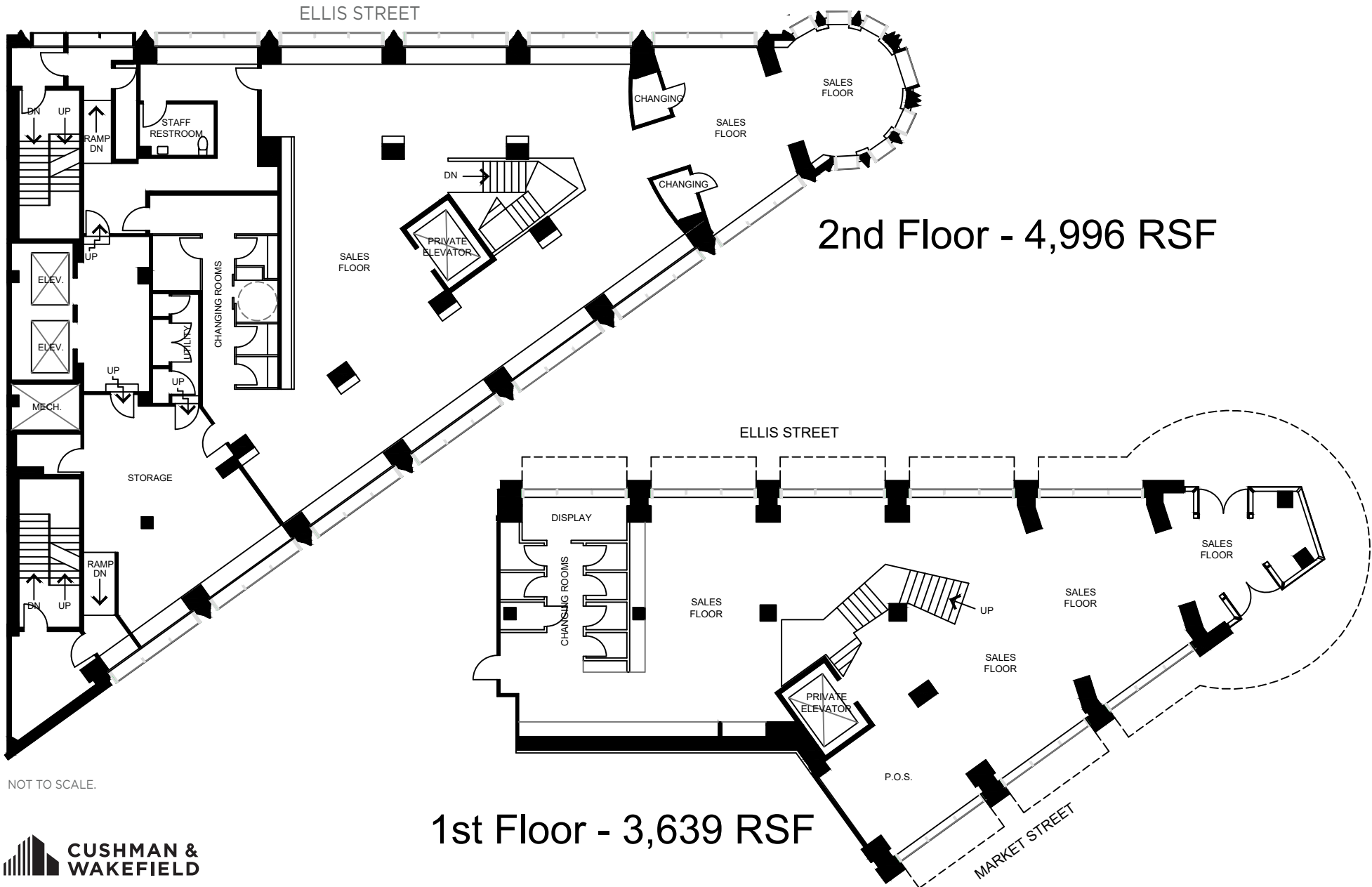


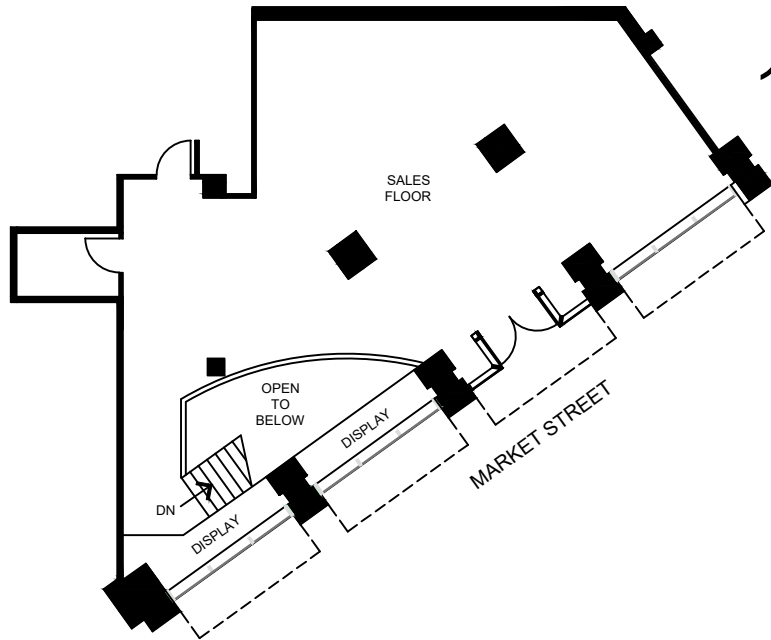
800  
MARKET  
STREET  
SAN FRANCISCO

 CUSHMAN &  
WAKEFIELD

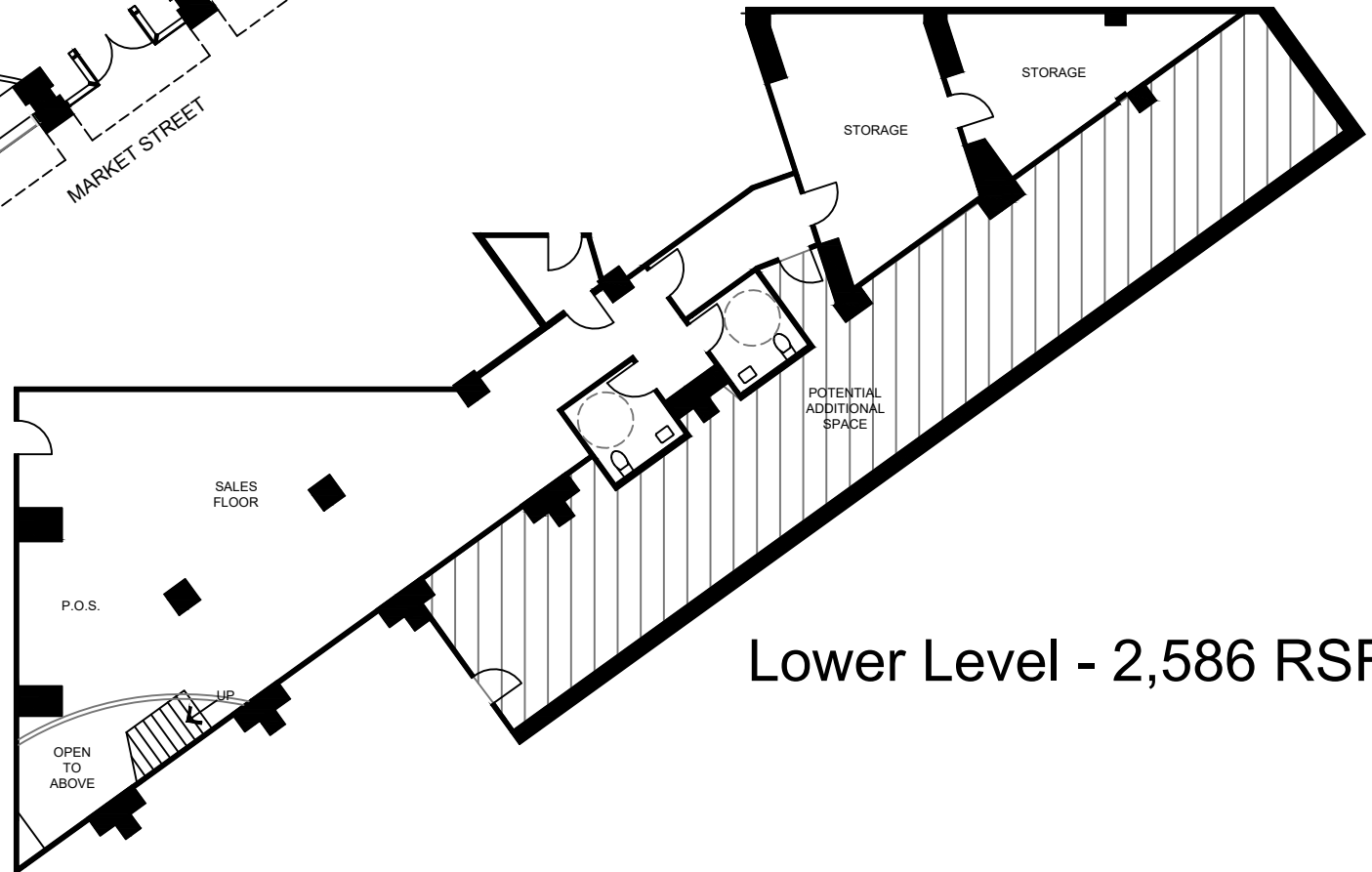
 FOUNTAINHEAD  
DEVELOPMENT

±5,600 RSF  
CREATIVE FULL FLOORS AVAILABLE



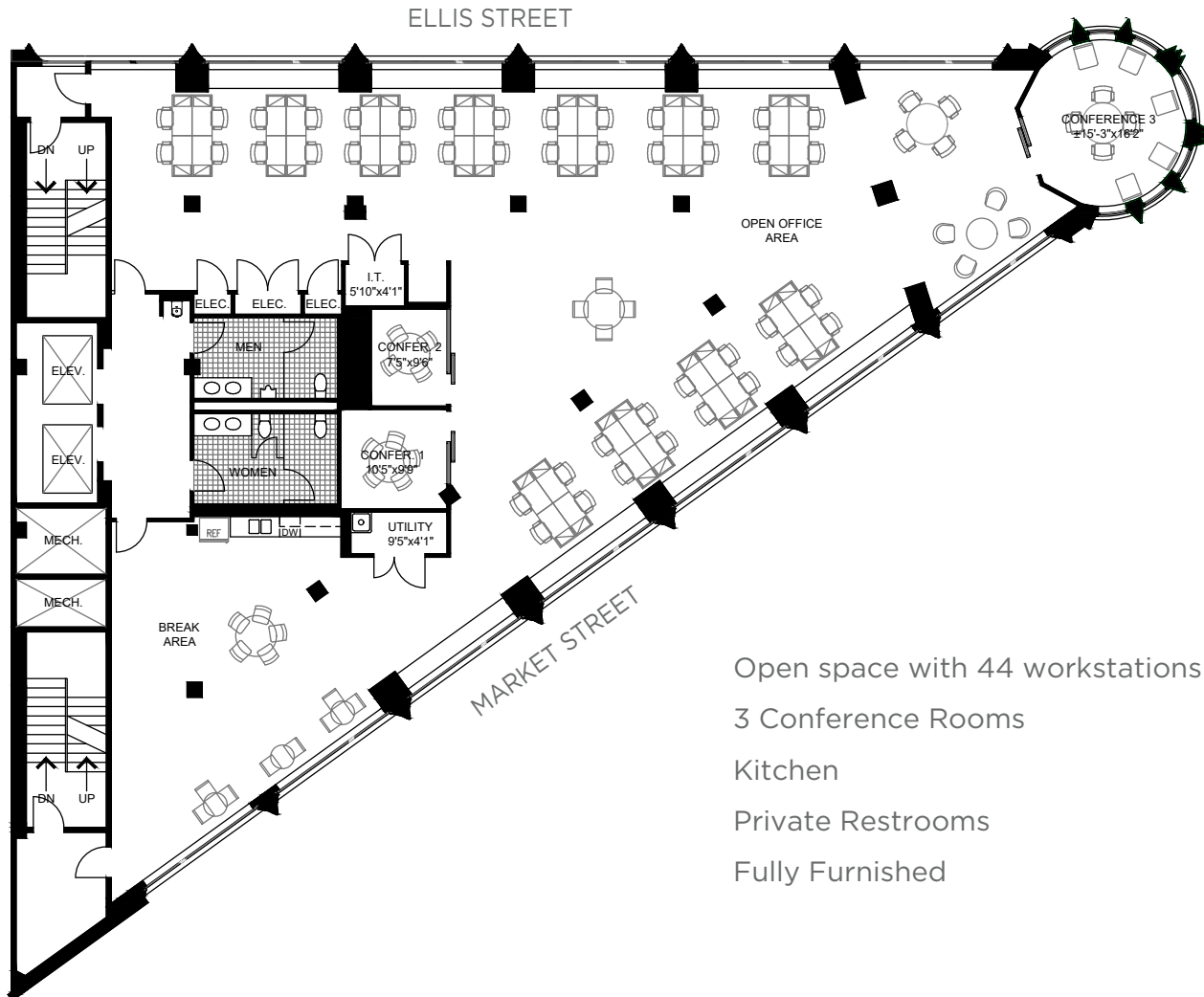


1 Floor - 2,007 RSF



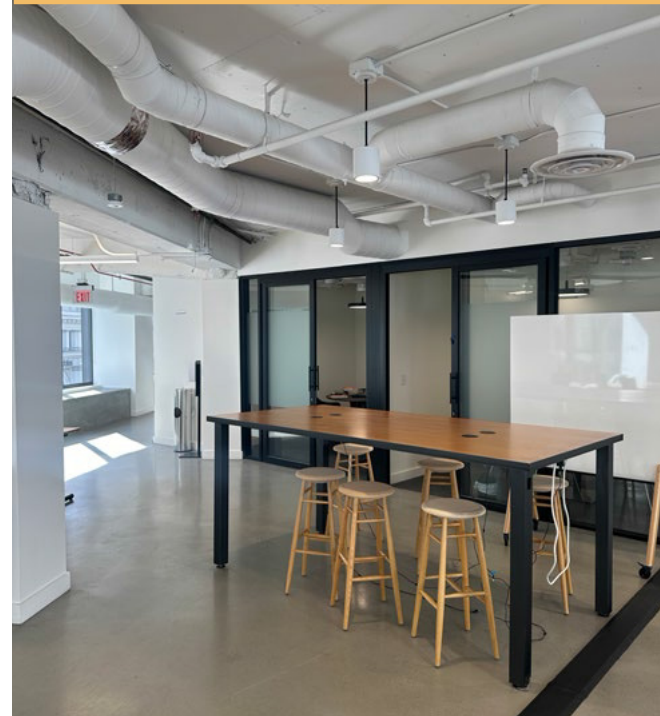
Lower Level - 2,586 RSF

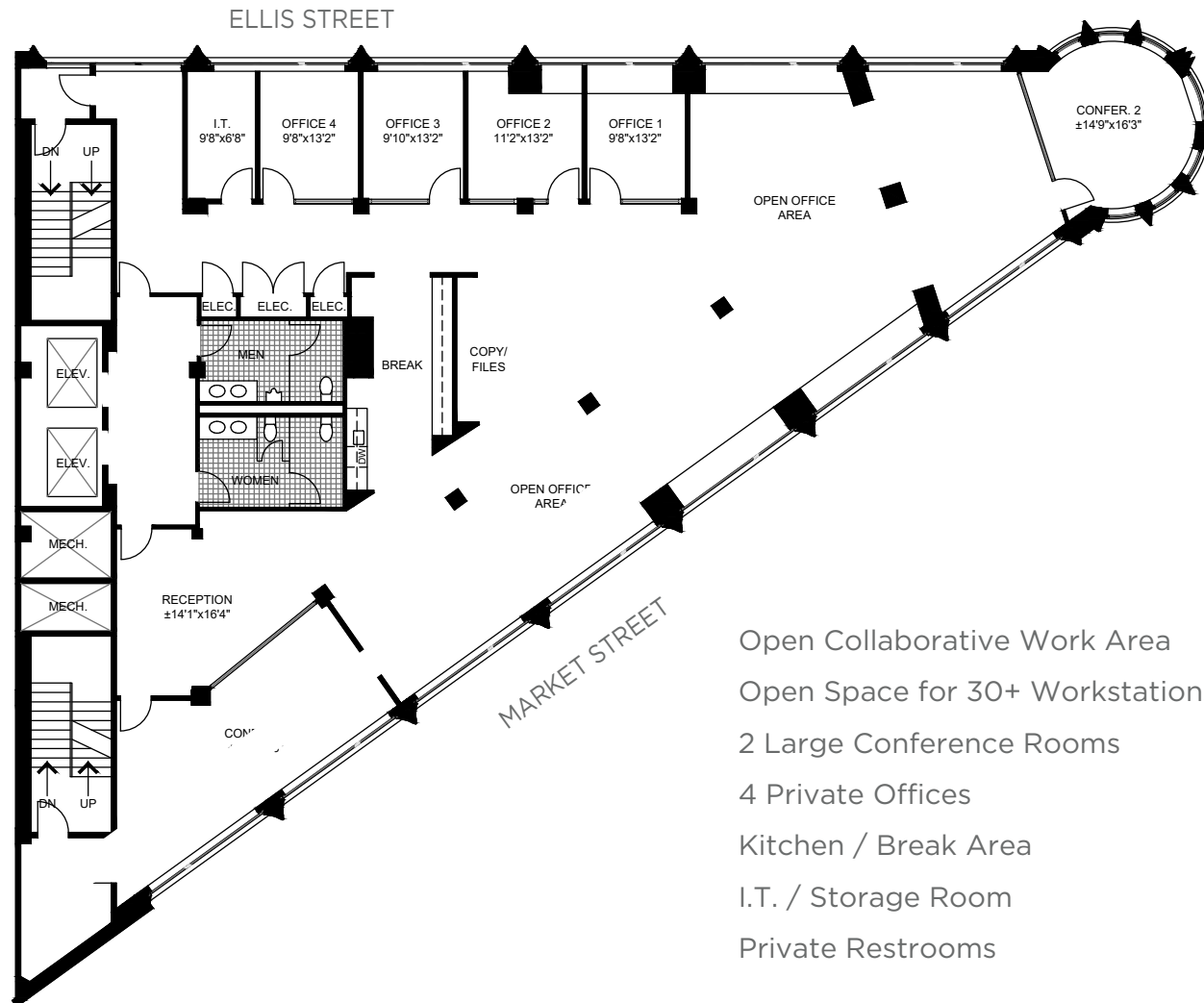
NOT TO SCALE.



NOT TO SCALE.

- Open space with 44 workstations
- 3 Conference Rooms
- Kitchen
- Private Restrooms
- Fully Furnished





- Open Collaborative Work Area
- Open Space for 30+ Workstations
- 2 Large Conference Rooms
- 4 Private Offices
- Kitchen / Break Area
- I.T. / Storage Room
- Private Restrooms

# 800 MARKET STREET SAN FRANCISCO

## PROPERTY ADDRESS

800 Market Street, San Francisco, CA 94102

### BRENDON KANE

415.677.0466

[brendon.kane@cushwake.com](mailto:brendon.kane@cushwake.com)

### ELENA SACCONI

415.633.4347

[elena.saccone@cushwake.com](mailto:elena.saccone@cushwake.com)

### BAILEE ESPOSITO

203.561.9499

[bailee.esposito@cushwake.com](mailto:bailee.esposito@cushwake.com)

